

Mineola - Code of Ordinance

- **Sec. 42-102. - Designating and marking of loading zones.**

(a)

The city council is authorized to cause loading zones to be designated and maintained which may be authorized by the city council from time to time, in accordance with the provisions of this division.

(b)

Loading zones for handling of passengers and heavy or bulky merchandise, supplies and materials shall be laid out and designated by orange colored lines or marks on the surface of streets and/or curbs, with the words Loading Zone painted thereon.

(Code 1977, § 16-43; Ord. of 7-29-1953, § 4; Ord. of 11-9-1981; Ord. No. 08-07-28, 7-28-2008; Ord. No. 09/12/21, §§ 1—4, 12-21-2009)

- **Sec. 42-104. - Loading zones—Uses and restrictions.**

(a)

It shall be unlawful for any operator to stand or park a vehicle in a loading zone for the purpose of loading or unloading passengers for a period in excess of two minutes.

(b)

The use of loading zones for the loading and unloading of merchandise, etc., shall be for handling of heavy or bulky merchandise, supplies and materials.

(c)

All such loading and unloading must be performed in an expeditious manner and no vehicle may remain in a loading zone either for a period of time longer than necessary to expeditiously load or unload the same, or while the operator thereof is soliciting or engaged otherwise than the loading and unloading of the vehicle, except that a reasonable time shall be allowed for giving or securing a delivery receipt.

(Code 1977, § 16-52; Ord. of 7-29-1953, § 15)

§ 70.10 PARKING REGULATIONS.

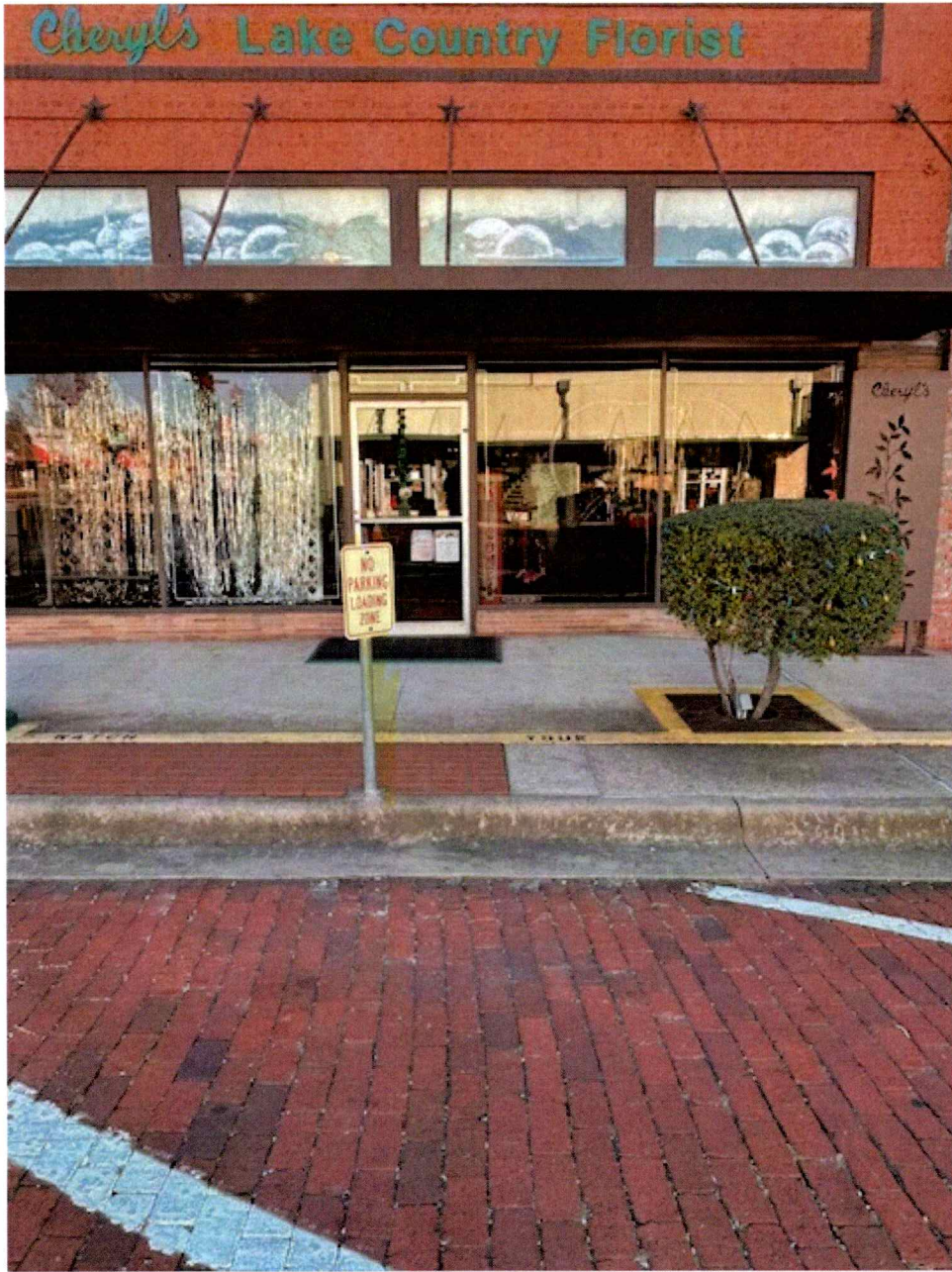
- (A) *No parking.* It shall be unlawful for any person to park, or leave standing, or fail to remove a vehicle of any kind at any place where official signs prohibit parking.
 - (B) *Two-hour parking.* It shall be unlawful for any person to park or leave standing, or fail to remove a vehicle of any kind for more than two hours at any place where official signs designate two-hour parking.
 - (C) *No parking during First Monday Trade Days.* It shall be unlawful for any person to park, or leave standing, or fail to remove a vehicle of any kind during First Monday Trade Days defined as Thursday through Sunday before the first Monday of every month when official signs so designate.
 - (D) *No parking/loading zones.* It shall be unlawful for any person to park, or leave standing, or fail to remove a vehicle of any kind for any purpose other than temporary loading or unloading where official signs limit parking in loading zones.
 - (E) *Authorized parking only.* It shall be unlawful for any unauthorized person to park, or leave standing, or fail to remove a vehicle of any kind where official signs limit parking to persons or customers specifically authorized.
 - (F) *Towing provisions.* The Police Department is directed to cause to be towed away any vehicle found parked or standing in violation of divisions (A), (B), (C), (D), or (E) of this section; and the owner of the vehicle shall be civilly liable to the person doing the towing for the reasonable cost thereof.
 - (G) *Effective date.* This section shall become effective and in full force immediately after its passage and publication as required by law.
- (Ord. 64-12, passed 12-21-1964; Ord. 2007-37, passed 1-20-2007) Penalty, see § 70.99

7.05.090 Loading Zones

- A. The City Manager is hereby authorized to establish such loading zones as are necessary for the conduct of business and to omit parking from such loading zones, and to properly set signs and mark such zones.
- B. No operator shall stand or park a vehicle in a loading zone for the purpose of loading or unloading passengers for a period in excess of ten minutes.
- C. The use of loading zones for the loading or unloading of merchandise shall be confined to the handling of heavy and bulky materials. All such loading or unloading must be performed in an expeditious manner, and no vehicle may remain in a loading zone for a period of time greater than necessary to expeditiously load or unload the same, nor while the operator is soliciting or engaged otherwise than in the loading or unloading of the vehicles, except that a reasonable time shall be allowed for the producing of a receipt for delivery.

('60 Code, § 11-5-23) (Ord. passed 5-1-56) Penalty, see GMC 7.03.310

S. Johnson St.



100 Blk N Johnson





Enter Address, Name, or ID



35

Here:

35584

35577

35581

35564

35574

35571

3557

35573

Mineola Flower Shop

ALLEY CARTS

(1 of 2)

Tract or Lot: 5A,6A
 Abstract Subdivision Code: 4030
 Block: 6
 Neighborhood Code: CMI-F1-DT
 School District: SMI
 City Limits: CMI

Property Location

Situs Number: 112
 Situs Street Prefix: W
 Situs Street Name: BROAD
 Situs Street Suffix:
 Situs City: MINEOLA
 Situs State: TX
 Situs Zip: 75773

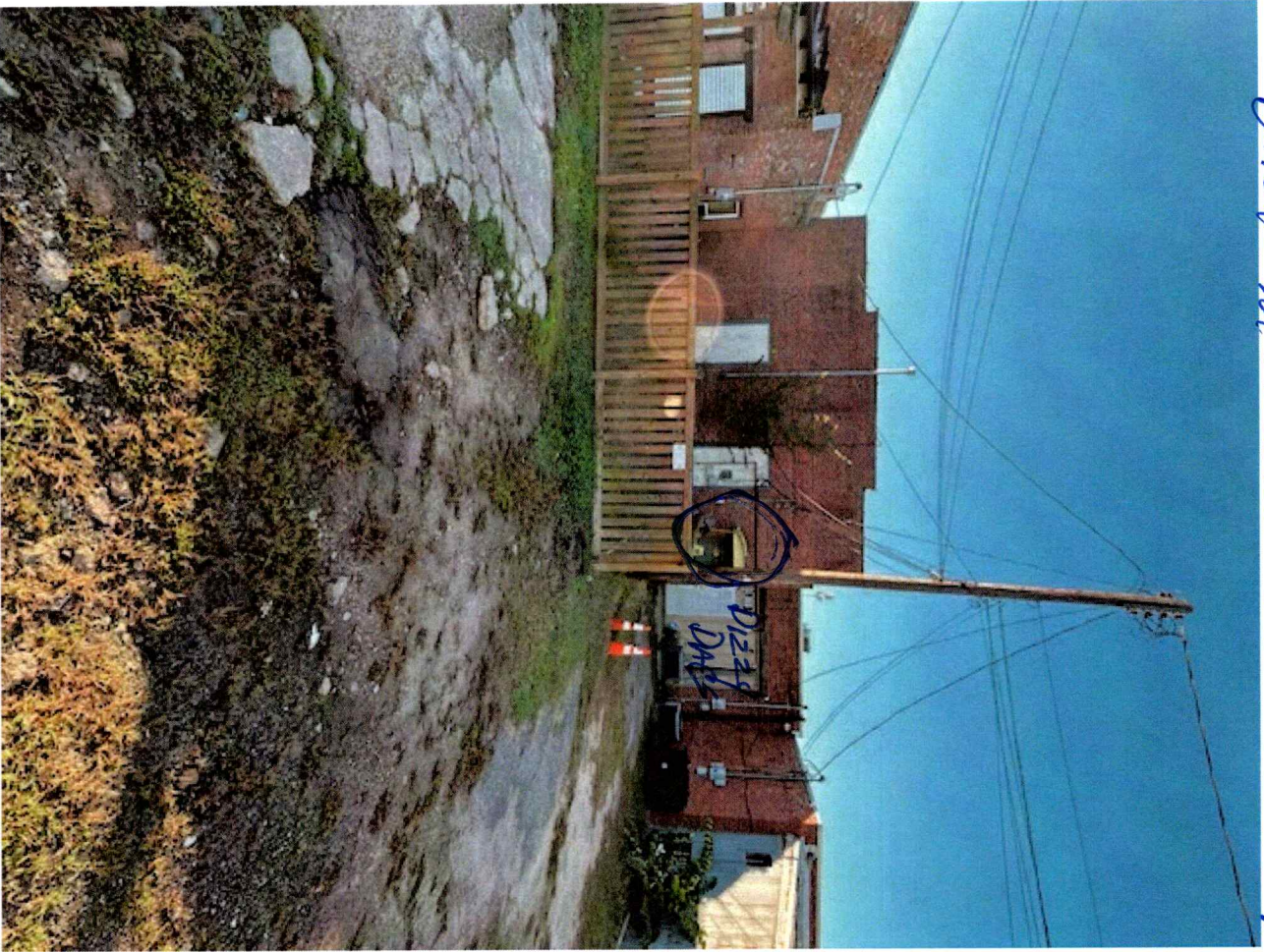
Owner Information

[Zoom to](#)

32°39'49"N 95°29'23"W




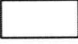
Back Minnesota Flower Shop



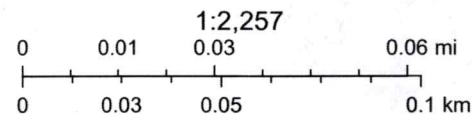
Wood CAD Web Map - OVERVIEW OF DOWNTOWN



11/21/2024, 1:14:39 PM

-  Parcels
-  Abstracts

SEVERAL OTHERS THAT ARE LANDLOCK
OR NO BACK DOOR
AROUND 13-15 BUSINESSES



© OpenStreetMap (and) contributors, CC-BY-SA

Wood County Appraisal District, BIS Consulting - www.bisconsulting.com

Disclaimer: This product is for informational purposes only and has not been prepared for or be suitable for legal, engineering, or surveying purposes. It does not represent an on-the-ground survey and represents only the approximate relative location of boundaries.